

LIBERCOURT

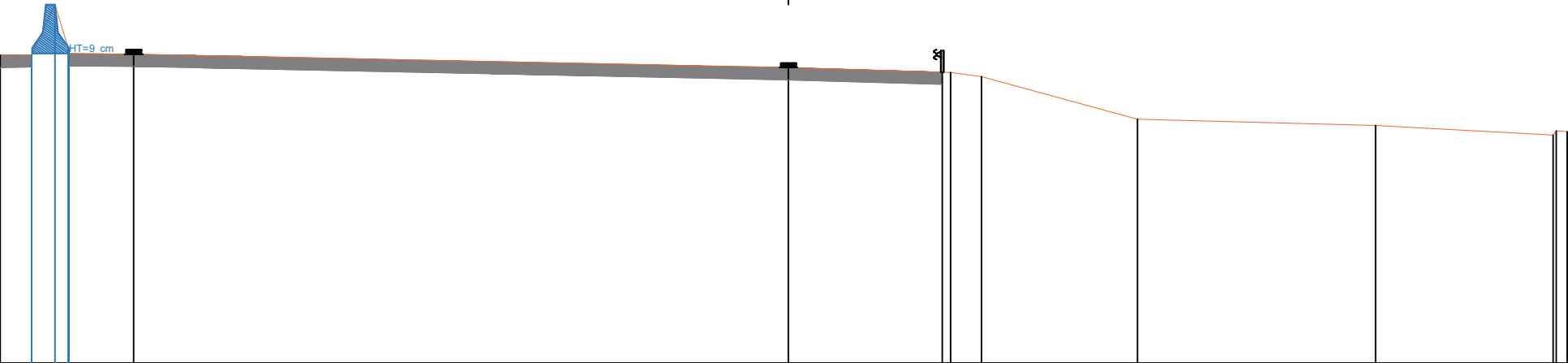
Autoroute A1

Sens Paris -> Lille

Profil P264

indice: 1

Sens Paris -> Lille



Echelle des longueurs : 1/100  
Echelle des altitudes : 1/100

PC : 19.00 m

Altitudes TN	24.01	24.02	24.04	24.04	24.03			23.81	23.74	23.73	23.67		22.97		22.87		22.78	22.77
Distances à l'axe TN	-12.853	-12.343	-11.960	-11.735	-10.677			0.000	2.511	2.648	3.149		5.695		9.576		12.524	12.703
Distances partielles TN	0.510	0.383	0.225	1.058		10.677		2.511	0.137	0.502	2.546		3.881		2.894		0.000	0.179